

Microscopic Wonders of the Human Body

BLD Expo

April 4 10:00 am – 4:00 pm

1425 Biomedical Physical Sciences Building

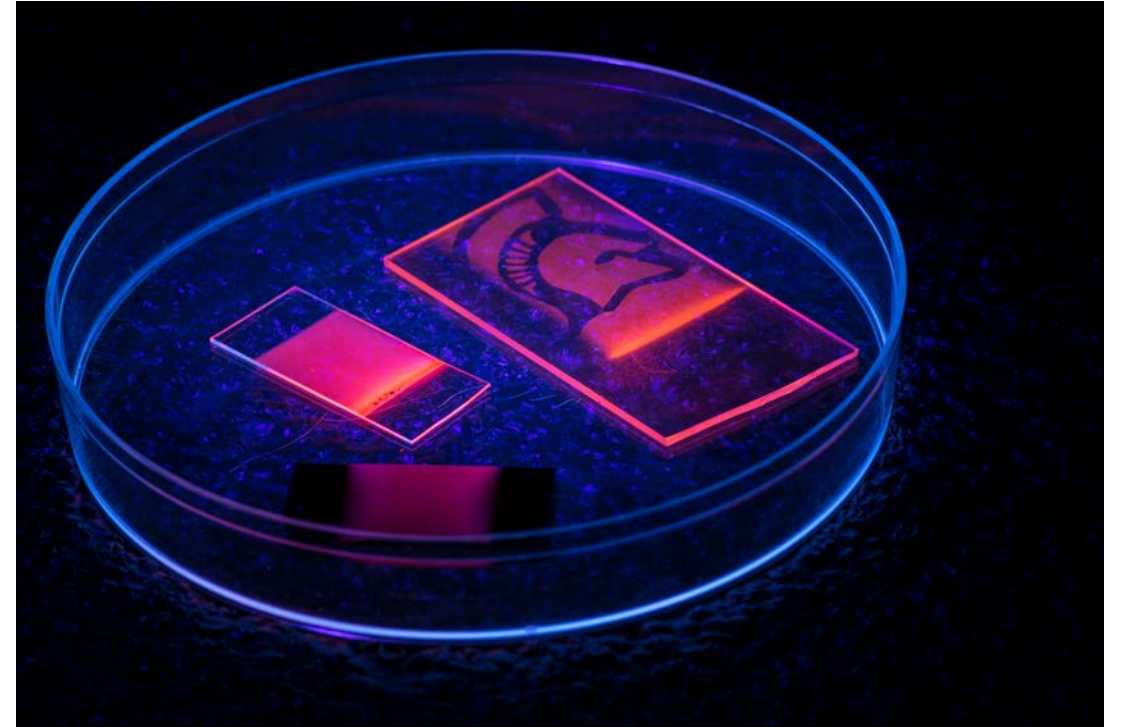
MSU Campus

Become a diagnostic detective!

BLD Expo activities:

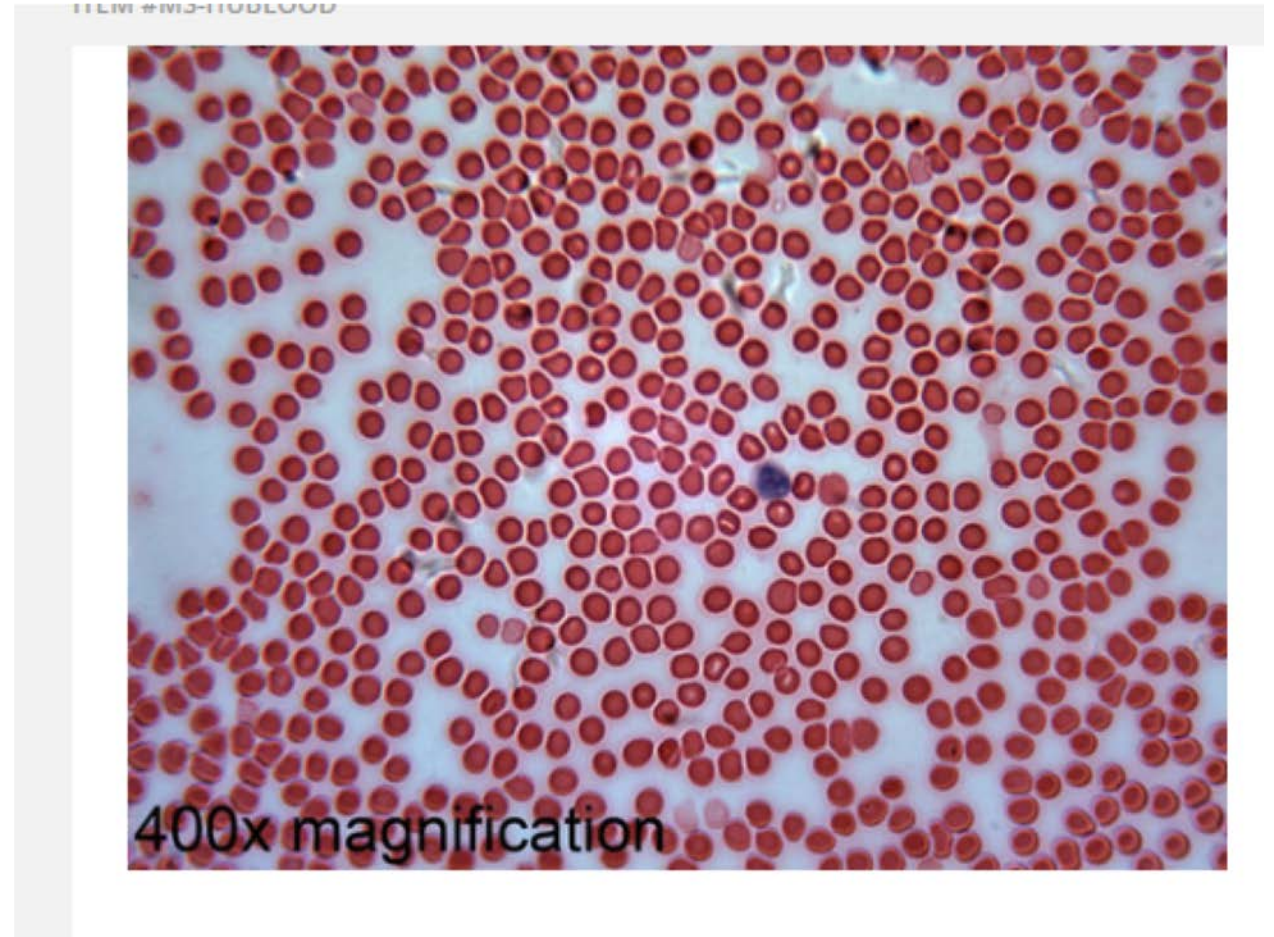
4 interactive stations

- Microscopes
- Cell coloring
- Handwashing
- The Medical Lab Science Profession



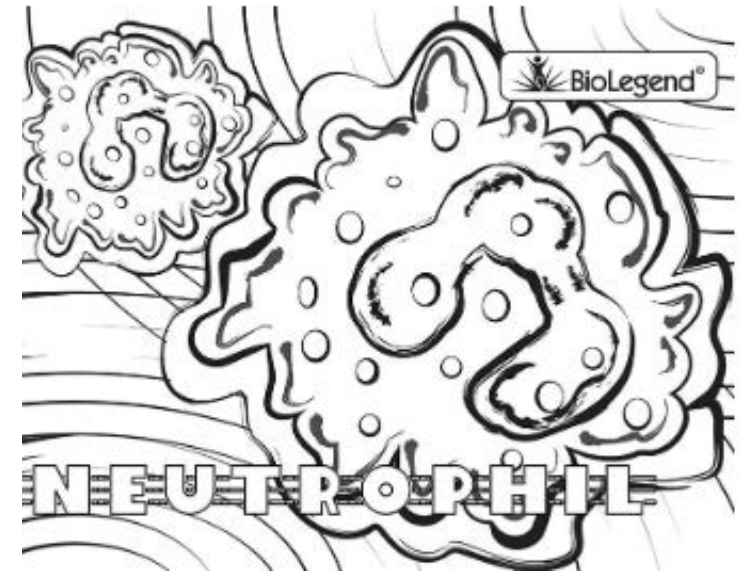
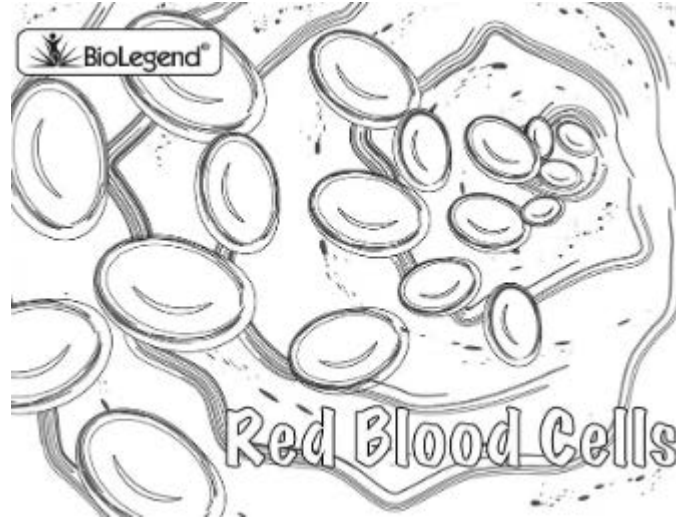
Microscope Station

- View a normal blood smear at 40x and correlate to health status



Coloring Station

- Learn about cells at an interactive coloring station



Handwashing Station

- Learn about the importance of handwashing and laboratory safety using Glo-Germ™



MLS/Professional / Giveaway Station

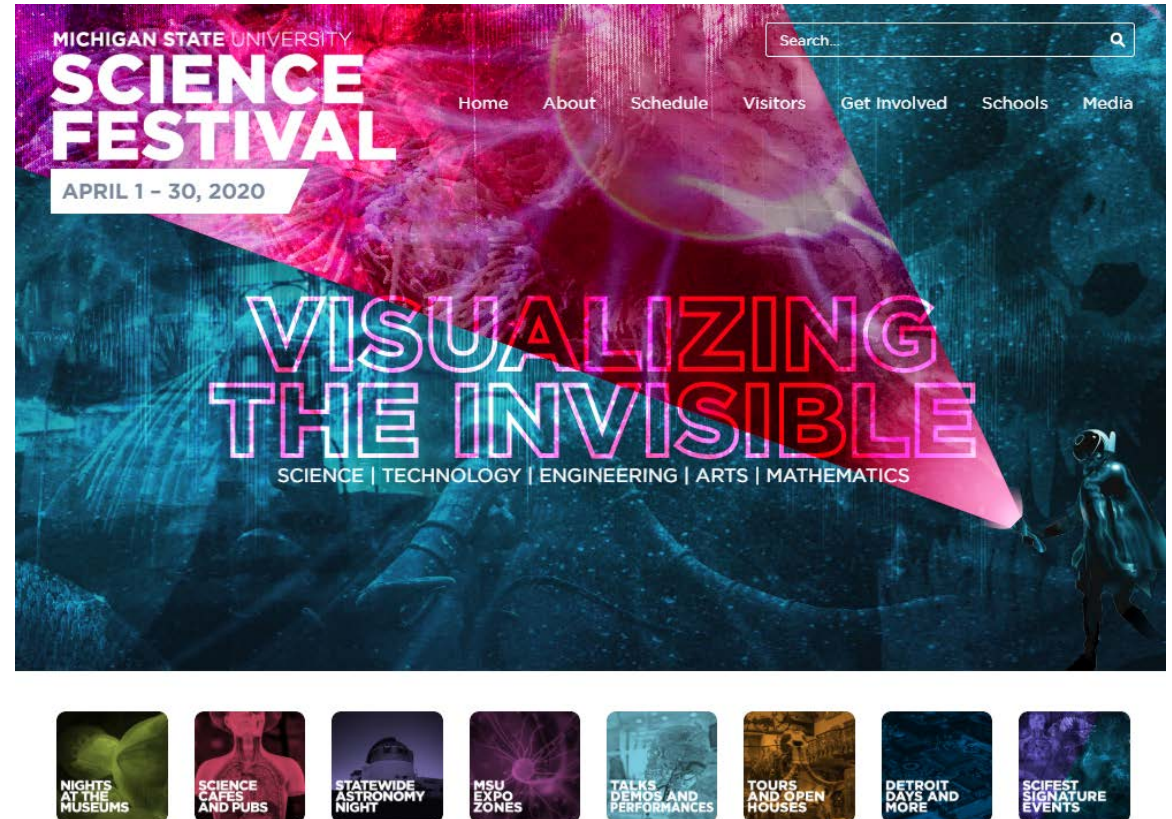
Learn more about MLS profession and pickup giveaways

- MLS information sheet and supplementary educational route materials
- Giveaways: science themed pin-on buttons and temporary tattoos



Check out the [MSU Science Festival Website!](#)

- Month long event, with > 250 activities on campus and statewide



We welcome:

People of all ages,
esp. families and
children

Our location: Room
*1425 Biomedical
Physical Sciences
Building, MSU Campus*

[Example Science
Festival: Philadelphia
Science Festival](#)





VISUALIZING THE INVISIBLE



MICHIGAN STATE UNIVERSITY

SCIENCE FESTIVAL

APRIL 1-30, 2020